




Mission Statement

The MTFCA Model T Museum is committed to collecting, preserving, and exhibiting artifacts from the Model T Ford era for future generations through displays and events that educate people of all ages on the history, lore, and skills needed to maintain the car that put the world on wheels.

Year in Review

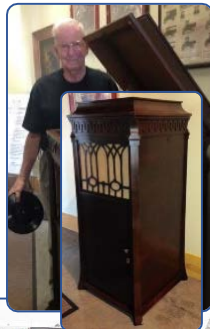
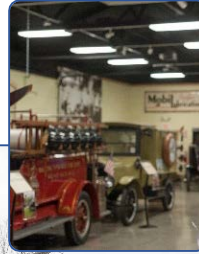
Your Generosity at Work

Contributions are made to the Model T Museum throughout the year, in many ways.

-  Sharing time and talents
-  Donating treasured vehicles, tools, books, art, and memorabilia
-  Giving of financial resources

Every contribution is appreciated and utilized to further our mission, spark interest, and nurture an understanding of the car that put the world on wheels.

Here are just a few examples of how your generous contributions helped to grow and improve the Museum this year ...



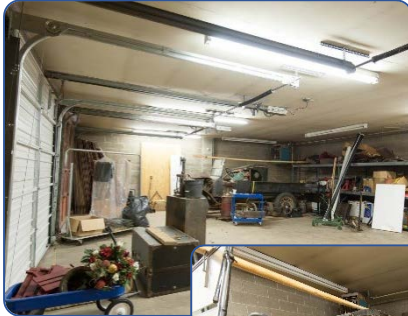
- Vintage Garage and Education Center designed and majority of construction already complete (*see reverse*)
- Attractive new signage to enhance displays, making them consistent and informative
- Nationally recognized special exhibit, “Gypsy Coeds Ride the Silver Streak,” spurring record attendance in Richmond
- 1915 Edison Phonograph restored
- Annex bathroom refurbished and now useable!
- Successful Homecoming, bringing visitors to community for Swap Meet, tours, and more
- Installation of permanent flagpole on grounds
- Framing historic items in Museum collection



Vintage Garage & Education Center

BECOMING A REALITY!

Thanks to the tireless efforts of many dedicated VolunTeers and the generosity of donors, the new Vintage Garage and Education Center will serve a dual purpose — as the centerpiece of the MTFCA Museum's educational outreach and also as an exhibit where visitors can experience the look and feel of a Model T-era service station. Grand Opening is expected in the first half of 2017!



**March
2016**



Work yet to be done ...

- Install new exit doors
- Historic photos printed
- Insulate & paint overhead door
- Shelving for Parts room
- Acquire authentic tools, parts, and signs
- Paint Annex interior



Progress through October 2016

Many More Plans & Opportunities

- 🔧 Complete Vintage Garage & Education Center
- 🔧 Reinvigorate existing school lessonplan using current multi-media technologies that will make the Model T story come alive
- 🔧 New exterior signage
- 🔧 Museum-specific website developed
- 🔧 Model T Experience: Oral History Project
- 🔧 Regular series of technical seminars for anyone interested in the Model T hobby
- 🔧 Continue to change and improve displays with props, lighting, and descriptors
- 🔧 Refresh Restoration Manuals

We hope you will be partner with us to keep the Model T Museum vibrant and growing!



Donations received between November 7–14, 2016 will be matched by the Wayne County Foundation and an anonymous MTFCA member. See complete details on enclosed letter.

All donations are tax deductible.